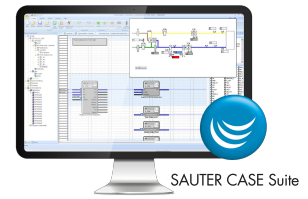


GZS 100, 150: CASE Suite

How energy efficiency is improved

SAUTER CASE Suite is a software package for handling building automation projects. Its comprehensive, tried-and-tested library contains energy-efficient strategies and methods. SAUTER CASE Suite is also highly flexible when it comes to adapting solutions to special circumstances, so that even very unusual customer installations can be efficiently operated in terms of energy.



GZS 100, 150

Features

- Supports the whole process of a project, from the planning stage to the engineering, commissioning and servicing phases
- 'Nerve centre' for the project data and software programs
- Seamless integration of the solution libraries
- Safeguards the workflow between the specialist sub-programs (CASE Builder, CASE Engine, CASE Vision)
- Planning and documentation of the system technology
- Commercial and technical project processing
- Creates the regulation, control and optimisation functions
- Puts the automation stations into service
- Based on the Microsoft Windows operating system
- Multi-lingual program (German, English and French)
- Licence is required for full use of the program

Technical data

System requirements		
Hardware	Processor	Intel I7 (recommended)
	Clock rate	2.4 GHz or higher
	RAM memory	Min. 4 GB RAM – recommended 8 GB RAM
	Storage capacity	Min. 20 GB free memory space
	Connections	USB (operating the VM licence dongle, SW installation from USB stick) Network
Software	Operating system	MS Windows 7, 8.1, 10 Professional + Ultimate each (x64) MS Internet Explorer 9.0 or higher MS IIS (Internet Information Services) installed
	Additional software ¹⁾	MS Office 2010 (32-bit) Graphics program [CorelDRAW GraphicSuite: 32-bit: X4, X5, X6, X7; 32/64-bit: X8, 2017, 2018, 2019]

Overview of types

i All licences delivered without CASE Suite application software

Type	Description
GZS150F010	CASE Suite Enterprise licence with maintenance [annual fees]
GZS150F011	CASE Suite Enterprise licence, excluding maintenance
GZS150F020	CASE Suite Enterprise time licence
GZS150F021	CASE Suite Partner time licence
GZS150F022	CASE Suite Designer time licence
GZS100F699	CASE Suite, current software version on data carrier

Accessories

Type	Description
0900360001	Hardlock VM

¹⁾ To be able to use all the functions of CASE Suite Enterprise, we recommend installing the following software.



Summary of functions

CASE Suite is designed for commercial and technical handling of projects for building management systems as well as conventional control systems.

The **CASE Suite** platform includes the following programs:

CASE Builder

The CASE Builder program has been designed for rational use in technical project handling. Pursuing the principle of automatically re-using values recorded once, such as data points, equipment and their functions, in the entire course of the project, without having to re-enter them time and time again, a graphics program and Microsoft Office were used as a basis for developing a tool that meets this aim to a very large extent.

With its comprehensive library, CASE Builder very efficiently generates all the necessary documents for design and implementation and adapts them to the specific requirements of the project. When putting together a plant (graphically or in a tree structure) from the existing function groups, all the necessary information is compiled so that the following items can be created at the touch of a button:

- Function descriptions
- Device, cable, motor and valve lists
- Data point lists, labels for automation stations (AS)

The project data thus obtained is saved in a project database and can be used for subsequent project handling and documentation. The process plans and data point information created by CASE Builder can be used by the SAUTER system visualisation applications.

CASE Engine

The CASE Engine editor and integrated library enable you to quickly create the graphics for the plant-specific automation station software as part of the project. This allows the function plans to be created and the stations configured. Control procedures are graphically represented and therefore easier to monitor.

The programming is based on the IEC 61131-3 (FBD) standard, which makes using CASE Engine even easier. As well as this, CASE Engine allows you to work in a team. With access to a shared project database, the same information is available to all members of the team at the same time (simultaneous engineering).

CASE Vision

The CASE Vision program is designed for simple creation of system navigation trees and dynamic system diagrams for various visualisation applications from SAUTER.

The project data from CASE Engine is used as data point references. The images and navigation structures are prepared using CASE Vision and subsequently displayed in the visualisation applications or refined as necessary.

CASE Library management

The **CASE Library Browser** program is designed for displaying the installed library packages and components, and also for deleting them when necessary.

CASE Library Import can be used for integrating additional library packages in the CASE package. This means they are subsequently available to users when creating the project.

The **CASE Library Manager** program allows administrators to create and manage library packages so that they can be distributed to users.

– Components –

CASE VAV

All the necessary settings for trouble-free operation of the ASV 115 and ASV 2*5 can be made in the menus of the CASE VAV software tool. As well as this, the most important input and output configuration parameters are factory-set for more efficient commissioning. Special functions for network configuration, network switching between SLC and BACnet MS/TP, online monitoring and troubleshooting neatly complete the scope of functions. An integrated BACnet browser enables configuration of the ASV in BACnet MS/TP mode.

CASE VAV Factory

User interface for downloading, with predefined parameterisation using CASE VAV, for the ASV 115 and ASV 2*5 VAV compact controllers. Ideal for OEM customers and for operation by users with little or no experience in VAV applications. The application has the following advantages:

- ASV 115 and ASV 2*5 settings can be made with a few clicks of the mouse and without entering parameters
- Optimised throughput time when presetting the ASV 115 and ASV 2*5 at VAV box manufacturers
- Documentation of downloads in a log

CASE Drives

CASE Drives is a program for commissioning the SAUTER ASM105SF132 and ASM115SF132 damper actuators and the AVM105SF132, AVM115SF132, AVM322SF132 and AVM234SF132 valve actuators. CASE Drives allows you to set and read the actuator parameters on site.

CASE Sensors

CASE Sensors allows you to configure and monitor SAUTER sensors. All parameters that can be modified using hardware operating equipment can be set using this application. As well as this, it also makes other parameters available for setting, depending on the device. CASE Sensors supports the following sensors: SGU sash sensor and EGP and SDX differential pressure sensors.

CASE TPC (Touch Panel Configurator)

The CASE TPC software is designed for programming the EYT 250 graphically. The software not only makes it easy to create the function interface, but also to configure and commission the EYT 250 and to modify structures and parameters.

– Tools –

CASE Tools offer various useful functions, including:

CASE Export

CASE Export allows you to make information from the automation stations such as parameters of I/O modules (house address, address text, dimensions etc.) available to other applications.

CASE Export BACnet

The CASE Export BACnet program creates EDE (Engineering Data Exchange) files (Format 2) for BACnet stations (SAUTER EY-modulo 3, EY-modulo 5 and modulo 6) and makes them available to other applications.

CASE Export novaNet

CASE Export novaNet provides the following functions: Exporting BMT parameters without groups (BMT 5.1), exporting BMT parameters with all tables (BMT 5.1 All Tables) and exporting the EDE file, novaNet export for the SAUTER OPC server and novaPro32 export for OPC server and CASE Vision.

CASE Import

During modernisation projects or if an old AS fails, stations from the EY2400 system are often replaced with state-of-the-art stations from the EY-modulo 5 system. This is where CASE Import is used. The address designations of the EY2400 station do not have to be typed in again, but can be transferred from the EY2400-FuPlan project to a current EY-modulo 5 project with CASE Builder. As well as this, a terminal list with the old and new terminal numbers is created so that the existing plant devices can be very easily connected to the EY-modulo 5 station.

BACnet Server Configurator

The IP address and other parameters of the novaNet-BACnet application masters (EYK 300 communication card, BACnet AS EYK 220, EYK 230 and EY-modulo 5 EY-AM 300) are configured via the SAUTER **BACnet Server Configurator** software module.

The configuration is transferred via the serial COM port (DB9 connector) or the Ethernet / IP port and saved in a flash memory where it is protected from power failure. Data transfer via IP takes place using the fixed TCP port 51966.

Migration Manager

The Migration Manager is available to support the migration of existing SAUTER novaPro Open and novaPro32 projects. It can be used to convert existing projects, or the project configurations can be

imported into CASE Vision for the final engineering. By adopting the data-point structure, the alarm definitions and the CASE Engine information, as well as the background images (as far as possible), the migration work and thus the costs are considerably reduced. By transferring additional novaPro Open data to a configuration file for CASE Vision, later adjustments in the CASE Engine project can be easily synchronised in CASE Vision.

– Communication –

CASE HWC (Hardware commissioning)

The hardware commissioning program is for efficiently checking the automation stations (novaNet AS) of the system and the connected field devices. After the hardware is commissioned, the program can be used for simple initial troubleshooting purposes.

CASE Sun

CASE Sun is the configuration tool for automation and ecos stations of the SAUTER EY-modulo 3, EY-modulo 5 and modulo 6 families. CASE Sun can be used for Ethernet network configuration, 1:1 testing during commissioning and any firmware updates for the stations. CASE Sun is designed both for SAUTER service engineers and for electricians on site.

The **CASE TCM** (CASE Touch Configuration Manager) application can be called up directly from CASE Sun. CASE TCM is used for configuring the touch screen operating devices for moduWeb Vision.

Devices recognised by CASE Sun can be licensed using the **SAUTER Licence Manager**.

Virtual Port Configurator

The Virtual Port Configurator visualises the settings of the virtual COM-Port drivers and allows you to change them. The following ways to configure the virtual ports are supported:

- Communication with the moduNet292 device (novaVPort driver)
- Communication between CASE VAV and the ASV actuators on the SLC bus connected to an ecos station
- Communication between the SMI commissioning tool (Easy Monitor) and the devices on the SMI bus of an ecos communication module

novaMit29x

novaMit29x is an analysis tool for the novaNet communication protocol. It can record data transfer from the network and then analyse it.

Licences

SAUTER CASE Suite is licensed using a software key. The scopes of functions for the various licences differ as follows:

CASE Suite Enterprise

Unrestricted functionality for all CASE Suite applications.

CASE Suite Partner

Functionality for the CASE applications required for engineering, such as CASE Engine, CASE Vision, CASE Sun. Other CASE applications are available in demo mode with restrictions.

CASE Suite Designer

Functionality for CASE applications required for planning, such as CASE Builder. Other CASE applications are available in demo mode with restrictions.

Intended use

This product is only suitable for the purpose intended by the manufacturer, as described in the «Summary of functions» section.

All related product documents must also be adhered to. Modifications to the product are not permitted.

Disposal

Data media must be disposed of in accordance with the relevant laws, separately from domestic waste. Please take them to an official collection point.

SAUTER is keen to ensure that all health and environmental regulations are complied with during recycling.